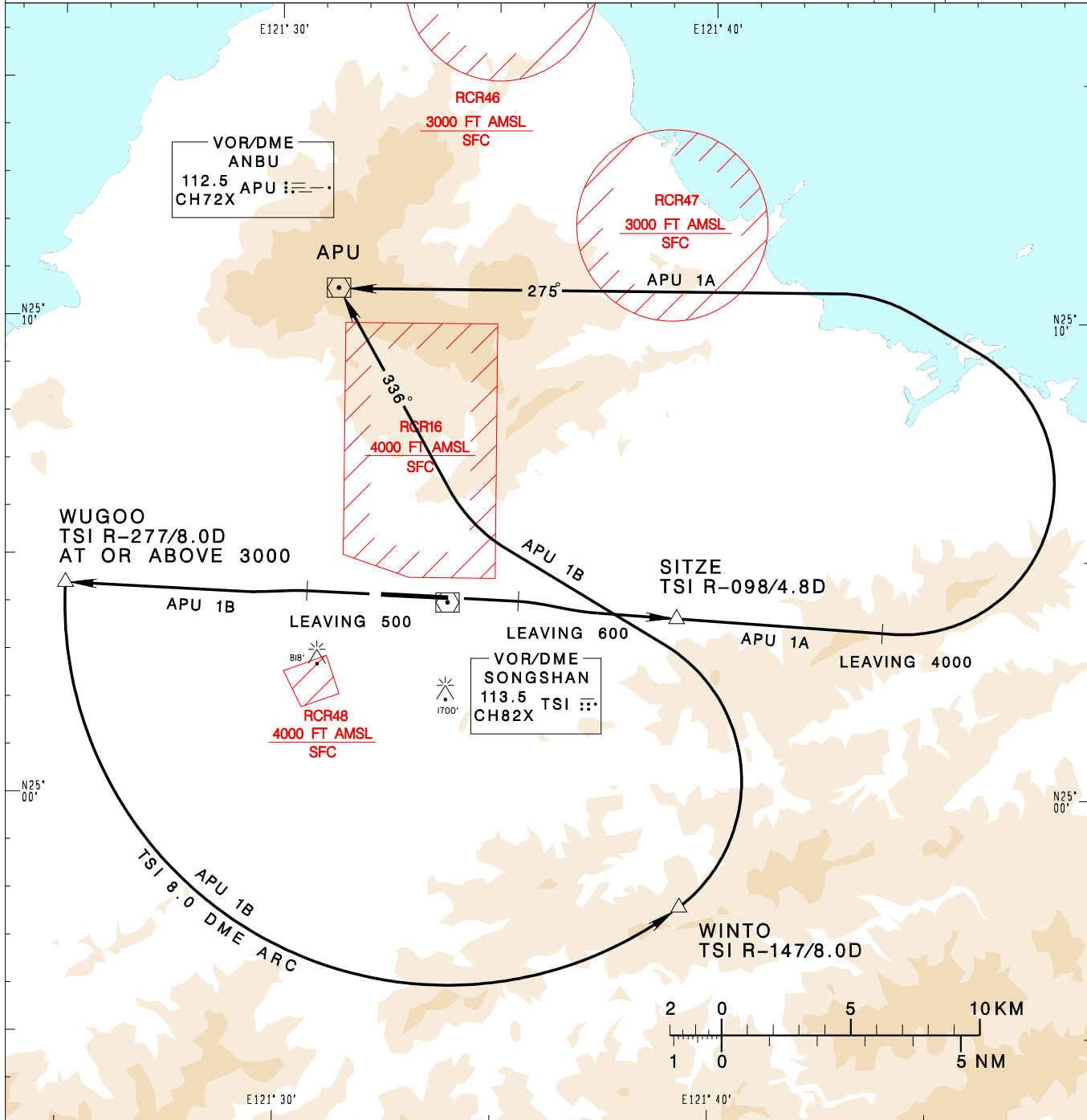


**臺北/松山機場**  
TAIPEI/SONGSHAN AD

RCSS SID  
APU 1A(RWY10)  
APU 1B(RWY28)

TAIPEI APP 119.7 119.6 125.1	SONGSHAN TWR 118.1	ATIS 127.4 341	VAR 5° W-2022	9100' MSA ARP 25NM
Apt Elev: 18'		Trans Level: FL130		
BEARINGS ARE MAGNETIC; DISTANCES ARE NAUTICAL MILES; ELEVATIONS, HEIGHTS IN FEET				



**ANBU ONE ALFA DEPARTURE**  
Climb on RWY HDG until 600ft, then track TSI R-098 to SITZE, continue TSI R-098 until 4000ft, then turn left to track APU R-095 to APU.

**ANBU ONE BRAVO DEPARTURE**  
Climb on RWY HDG until 500ft, then track TSI R-277 to WUGOO, cross WUGOO at or above 3000ft, then turn left join TSI 8.0 DME arc to WINTO, then turn left to track APU R-156 to APU.

- NOTE**
1. APU 1A:  
Minimum climb gradient required: 7.0% (426ft/NM) until 4000ft.
  2. APU 1B:  
Minimum climb gradient required: 7.0% (426ft/NM) until WUGOO.
  3. ATS surveillance required.
  4. Caution high terrain around airport.
  5. A 1700ft-high BLDG at 2.1NM south of THR 28.
  6. A 818ft-high BLDG at 2 NM SW of THR 10.

CHANGES: NEW CHART